

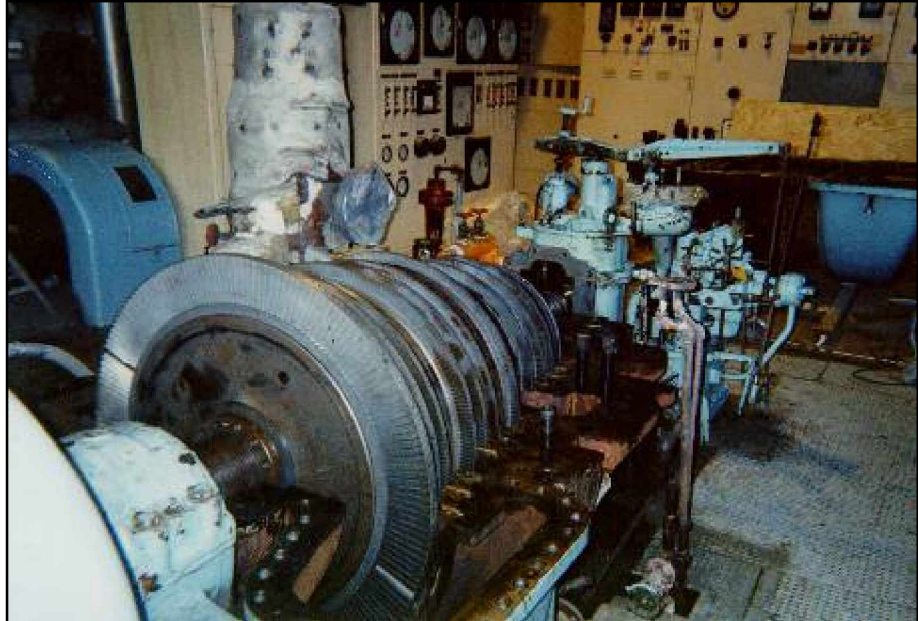
PAPER MILL COGENERATION PLANT

Client:
Pekin Paperboard

Project Location:
Pekin, IL

Capacity:
40,000 lb/hr steam
1,500 kW electric

**Approximate
Installed Value:**
\$600,000



PCI conducted a feasibility study to determine whether reactivation of the mill's existing steam turbine generator and powerhouse could result in energy cost savings for a Midwest paper company. Then, PCI was hired to manage the work recommended in the study.

The scope of work included:

- Performed study-evaluating options for a moth-balled paper mill steam turbine and powerhouse, consisting of a vintage 40,000 lb/hr natural gas-fired boiler and 1,500 kW extraction/condensing steam turbine generator
- Recommended reactivation of the powerhouse as the best option for reducing mill's energy costs
- Developed the scope of work for mechanical and electrical systems
- Managed and coordinated boiler inspection
- Managed and coordinated the steam turbine generator disassembly and inspection
- Managed and coordinated the steam turbine generator and plant auxiliary equipment rebuild and repair
- Prepared a complete set of powerhouse operating instructions
- Assisted with the selection and training of powerhouse operators
- Successful commissioning, startup and return-to-service of the re-commissioned powerhouse and steam turbine generator
- Managed plant operations for several months prior to turnover to owner

